

Jeep Wrangler TJ 2 Piece Hardtop Half Door Instructions

PLEASE READ CAREFULLY BEFORE STARTING INSTALLATION

To safely lift and install this hardtop, you will need the assistance of at least one other person.

WARNING

The top on this vehicle is designed only for additional protection against the elements.

Do not rely on the top to contain occupants within the vehicle or to protect against intrusion of foreign objects, nor injury during an accident.

Make sure all brackets and screws are tight. Periodically check for tightness and retighten when necessary.

WEAR SEAT BELTS AT ALL TIMES

Parts List for Hardtop Installation

6 each Bolt 5/16 x 18 x 1 1/4

6 each Nut 5/16 x 18

9 each Washer 5/16

3 each Wing Nut 5/16

3 each Side Brackets

1 each Center Bracket

Instructions

TJ 2 Piece Full Door Installation Instructions



1. Unzip side windows and remove.



2. Unzip rear window and remove.



3. Pull back bar off and remove.



4. Pull down on corners and disengage.



5. Pry open side connections with screwdriver.



6. Remove side connections to door frame.



7. Disengage soft top from windshield.



8. Pull back soft top.



9. Remove bolt from soft top frame.



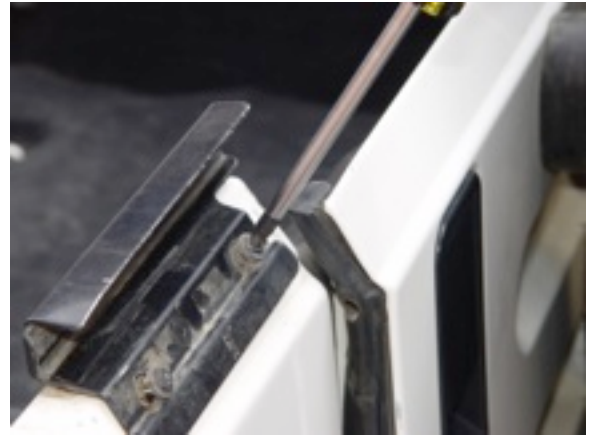
10. Pry off soft top frame from roll bar.



11. Remove soft top.



12. Unscrew door pins & remove frames.



13. Remove rear bar holders.



14. See pre-installation instruction sheet.



15. Do not remove front corner seal.



16. Skip to the half door instructions and install the half doors. Now using 2 or more people put the rear section on, followed by the front section.



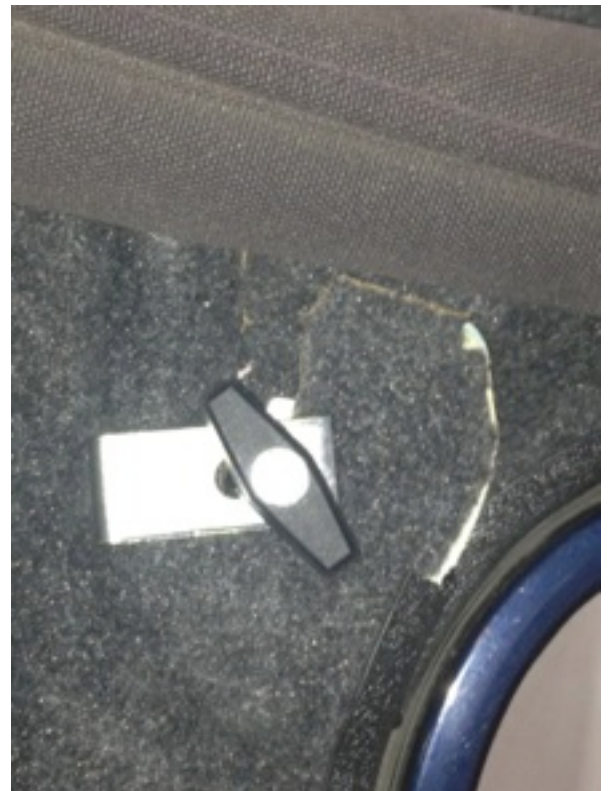
17. Sit in the front seat. Make sure the windshield stop is not hung up on the molding. It should look like this.



19. Make sure the front section is centered on the windshield. Push it from the side to center it.



20. Install the flange bolts on the side rails and tighten lightly.



21. Install the side clamps, using the washers and wing nuts. The clamp should be installed with the 90 degree angle facing the back and inward. Do not tighten.



22. Using a side clamp bracket and the center bracket. Install the center support, using the washer and wing nut.



23. Try the doors to make sure you have proper clearance. Too tight and the door seal will stick, too loose and the door will leak wind. Adjust by moving the rear top back.



24. Engage the front cam locks, adjust to medium tension. Look at the windshield in the front, the top should be down

25. Tighten the rear flange bolts. Tight the 3 front section wing nuts. Very slowly shut the rear door, make sure it is not binding. Now swing the gate closed.



Your done. Enjoy!!

Jeep Upper Half Door Installation

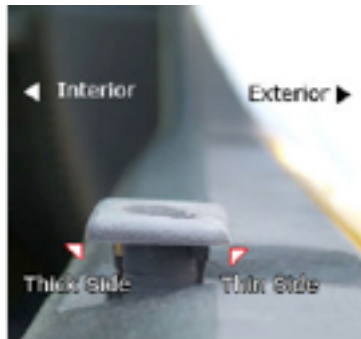
Jeep YJ 1987-1996 and Jeep TJ 1997-2006

Warning

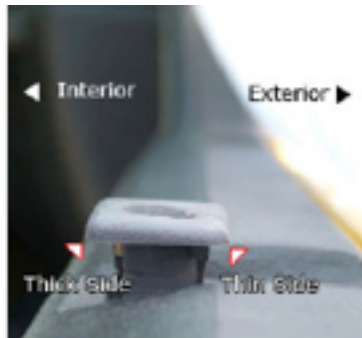
This product is designed only to enhance the appearance of the vehicle and to protect against some undesirable weather conditions. It is not designed to hold occupants inside the vehicle, or to protect against foreign objects, or as protection in the event of an accident. Occupants should always wear seat belts at all times.



Remove the soft upper half doors. Remove the factory installed Jeep door inserts by using a large flat-bladed screw driver and gently prying them up. (See image to the right)



Once loose, the door inserts can then easily be removed by hand. There should be three (3) per side. (Please note the positioning of the Jeep Door Inserts before removal. The flange of the inserts must be rotated correctly in order for the inserts to sit flush with the door when reinstalled).(See image to the right)



Install the new door inserts back into the lower door holes. There is a tab on one side of the insert, it can only fit into the hole in one direction. If the inserts are installed properly, the top plastic flange will rest against the top portion of the door.

Place the metal washer first and then the plastic washer onto the bolts. Place the upper half door onto the lower half door. Insert the bolts, 4.5" bolt in the front and the 5.0" bolts in the back two holes.



As you tighten the bolts, from the top of the insert, pull in, until they are snug. **DO NOT OVER TIGHTEN.**

Remember

It is the owners responsibility to perform monthly maintenance checks of all fasteners. To insure that they are tight. Doing so will insure safe operation and long life of your upper half doors.

Parts List

2 each	3/8" x 4.5" Button head bolts	uses 7/32 allen wrench
4 each	3/8" x 5.0" Button head bolts	uses 7/32 allen wrench
6 each	3/8" Nylon washers	
6 each	3/8" Steel washers	
6 each	Door inserts	
1 each	Left upper half door	
1 each	Right upper half door	
1 each	Instruction sheet	

Jeep Pre-Installation Instructions



1. Place your tape on top ledge of the windshield.



2. Extend the tape to the rear of the body.



3. Where the tape hits the body, it should read the value in the chart below. Measure both sides. If it does, put the top on. If not, go to step 4.



4. CJ 5 Loosen the bolts and wing nut. Adjust windshield and tighten.



4. CJ7 - CJ 8 - YJ Loosen bolts using a T40 torx wrench. Go to step 5.



4. TJ & Unlimited Using a T40 Torx wrench, loosen the bolt above the doors hinge. Go to step 5.

5. Using a T50 tamper resistant Torx wrench or vise-grips, loosen this bolt. On the CJ 7 & YJ's it's on the top of the roll bar. On the TJ & Unlimited it's on the side of the roll bar. This will be a 2 person job. One checks the measurement, the other person tightens the bolt. Remember 75 1/8" on both sides. (Unlimited 89 7/16"). Once this is accomplished, tighten up the bolt you loosened in step 4. Now you can put your top on. If the windshield is properly adjusted, the space between the windshield and the door should be the same on both sides.

CJ 5	67 1/4 "
CJ 7 & YJ	75 1/8"
CJ 8	97 11/16"
TJ	75 1/8"
Unlimited	89 7/16"