

1987-1995 Jeep Wrangler YJ Hardtop with Half Doors
Installation Instructions

PLEASE READ CAREFULLY BEFORE STARTING INSTALLATION

To safely lift and install this hardtop, you will need the assistance of at least one other person.

WARNING

Text

The top on this vehicle is designed only for additional protection against the elements.

Do not rely on the top to contain occupants within the vehicle or to protect against intrusion of foreign objects, nor injury during an accident.

Make sure all brackets and screws are tight. Periodically check for tightness and retighten when necessary.

WEAR SEAT BELTS AT ALL TIMES

Parts included in the installation kit

6 each	Bolts	5/16 x 18 x 1 1/4
6 each	Nuts	5/16 x 18
6 each	Washers	5/16
2 each	Windshield clips	

Follow the instructions and perform the steps in the sequence given. Short cuts to the directions may result in an unsatisfactory installation.

1. Perform Jeep Pre-installation Checks
2. Install Hardtop
3. Install Half Doors



1. Remove soft top moldings around tub.



4. Remove soft top corner moldings.



2. Remove soft top moldings around tub.



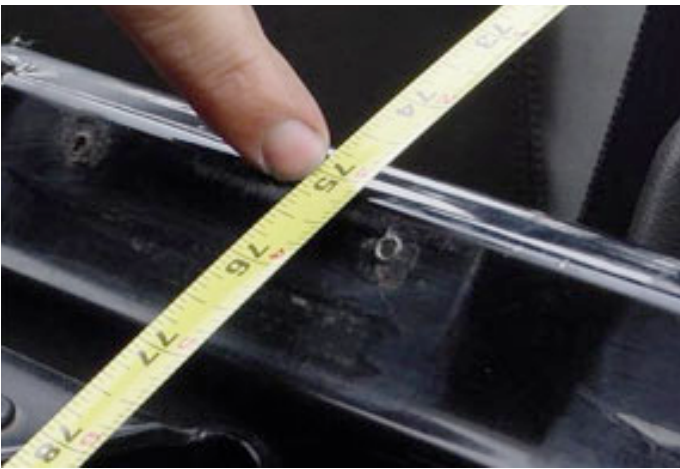
5. Remove soft top rear moldings.



3. Remove soft top molding above windshield.



6. Attach tape to windshield frame.



7. It should touch at 75 1/8".
(see enclosed pre-install instructions)



10. Install the 4 washers and bolts. Tighten down with supplied nut plates.



8. Using two people, install the hardtop.



11. Attach catch clip under visor.



9. Adjust hardtop on body.



12. Adjust cam-lok to medium tension and lock.

Enjoy!!

Jeep Upper Half Door Installation

Jeep YJ 1987-1996 and Jeep TJ 1997-2006

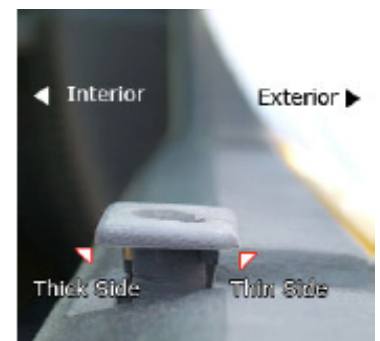
Warning

This product is designed only to enhance the appearance of the vehicle and to protect against some undesirable weather conditions. It is not designed to hold occupants inside the vehicle, or to protect against foreign objects, or as protection in the event of an accident. Occupants should always wear seat belts at all times.

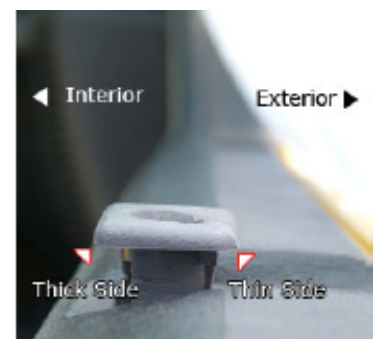
Remove the soft upper half doors. Remove the factory installed Jeep door inserts by using a large flat-bladed screw driver and gently prying them up. (See image to the right)



Once loose, the door inserts can then easily be removed by hand. There should be three (3) per side. Next run a screw driver bit down each hole about 6". Make sure the hole is not obstructed. Some YJ's have a plate at the bottom of the hole. You might need to run a 7/16" drill bit to clear the hole.



Install the new door inserts back into the lower door holes. There is a tab on one side of the insert, it can only fit into the hole in one direction. If the inserts are installed properly, the top plastic flange will rest against the top portion of the door.



Place the metal washer first and then the plastic washer onto the bolts. Place the upper half door onto the lower half door. Insert the bolts, 4.5" bolt in the front and the 5.0" bolts in the back two holes.



As you tighten the bolts, from the top of the insert, pull in, until they are snug. **DO NOT OVER TIGHTEN.**

Remember

It is the owners responsibility to perform monthly maintenance checks of all fasteners. To insure that they are tight. Doing so will insure safe operation and long life of your upper half doors.

Parts List		
2 each	3/8" x 4.5" Button head bolts	uses 7/32 allen wrench
4 each	3/8" x 5.0" Button head bolts	uses 7/32 allen wrench
6 each	3/8" Nylon washers	
6 each	3/8" Steel washers	
6 each	Door inserts	
1 each	Left upper half door	
1 each	Right upper half door	
1 each	Instruction sheet	

Jeep Pre-Installation Instructions



1. Place your tape on top ledge of the windshield.



2. Extent the tape to the rear of the body.



3. Where the tape hits the body , it should read the value in the chart below. Measure both sides. If it does, put the top on. If not, go to step 4.



4. CJ 5 Loosen the bolts and wing nut. Adjust windshield and tighten.



4. CJ7 - CJ 8 - YJ Loosen bolts using a T40 torx wrench. Go to step 5.



4. TJ & Unlimited Using a T40 Torx wrench, loosen the bolt above the doors hinge. Go to step 5.

5. Using a T50 tamper resistant Torx wrench or vise-grips, loosen this bolt. On the CJ 7 & YJ's it's on the top of the roll bar. On the TJ & Unlimited it's on the side of the roll bar. This will be a 2 person job. One checks the measurement, the other person tightens the bolt. Remember 75 1/8" on both sides. (Unlimited 89 7/16"). Once this is accomplished, tighten up the bolt you loosened in step 4. Now you can put your top on. If the windshield is properly adjusted, the space between the windshield and the door should be the same on both sides.

CJ 5 (1972-1975)	70 3/4"
CJ 5 (1976-1983)	67 1/4 "
CJ 7 & YJ	75 1/8"
CJ 8	97 11/16"
TJ	75 1/8"
Unlimited	89 7/16"